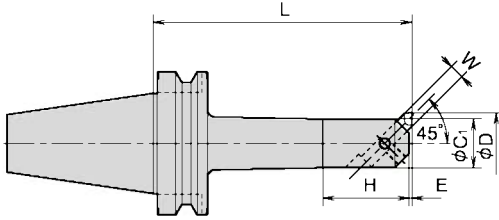
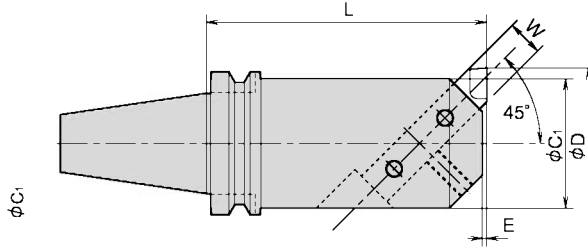
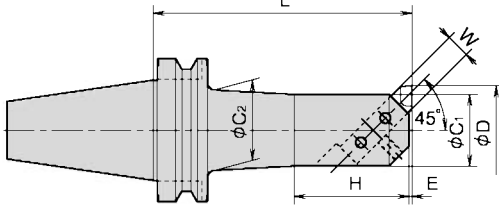
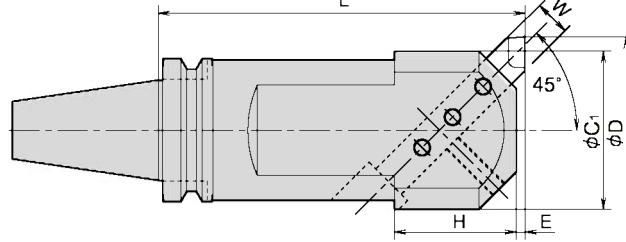
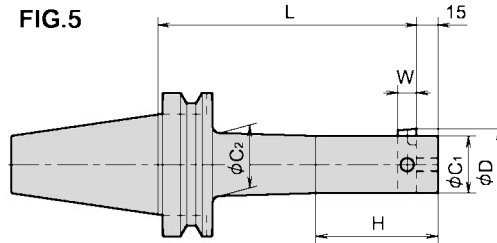


**FIG.1**

**FIG.3**

**FIG.2**

**FIG.4**

**FIG.5**


CODE	型 式	FIG	D		L	C <sub>1</sub>	C <sub>2</sub>	H	E	W
			MIN	MAX						
06442	BT40-BSA 30- 150	1	30	42	150	24	26	40	1.6	8
06443	-BSA 38- 165	1	38	52	165	30	33	50	2.6	10
06444	-BSA 42- 165	1	42	56	165	34	37	60	2.0	10
06448	-BSA 62- 240	2	62	90	240	50	56	80	2.0	16
06449	-BSA 72- 180	3	72	110	180	60	-	-	2.4	19
06450	- 240				240					
06451	-BSA 90- 180	4	90	125	180	75	22	110	4.0	19
06452	- 240				240					
06541	BT50-BSA 25- 135	1	25	38	135	20	22	35	1.0	8
06545	-BSA 50- 180	1	50	65	180	40	44	65	3.0	13
06547	-BSA 62- 195	2	62	90	195	50	56	80	2.0	16
06549	-BSA 72- 195	2	72	110	195	60	66	95	2.4	19
06551	-BSA 90- 210	2	90	125	210	75	80	110	4.0	19
06555	-BSA130- 255	4	130	190	255	110	-	85	6.0	25
06461	BT40-BSB 25- 135	5	25	52	135	20	22	50	-	8
06462	-BSB 38- 165	5	38	70	165	30	32	70	-	10
06463	-BSB 50- 165	5	50	90	165	40	44	85	-	13
06464	- 225				225					
06561	BT50-BSB 25- 135	5	25	52	135	20	22	50	-	8

注：ドライブキー溝と刃先は同位相です。  
 ボーリングバイトは付属していません。  
 上記商品は廃盤の為、在庫のみの販売です。